



Label  
Information  
Charging station

# Ford Connected Charge Station Operation manual

## 48A Single Phase



### WARNING

- Immediately notify Customer Service if the charge station, charging cable or the charging coupling are damaged. Do not continue to use the charge station.
- Prevent the charging cable and coupling from coming into contact with external heat sources, water, dirt, and chemicals.
- Switch off power at the circuit breaker before installing or cleaning.
- Do not attach extension cables or adapters to the charging cable.
- Never clean the charge station with a high-pressure cleaner or similar.
- Switch off the power supply before cleaning the charging sockets.
- The charging cable must not be subjected to any strain during use.
- You must make sure that no one has access to the charge station without reading this user manual first.
- Make sure that the charge station temperature is within its storage temperature limits when moving, transporting, or storing it.
- You are strictly prohibited from pulling the charge station by its cable.



### WARNING

When transporting the Ford Connected Charge Station, handle with care. Do not subject it to strong force or impact, also do not pull, twist, tangle, drag, or step on the Ford Connected Charge Station to prevent damaging it or any of its components.



### NOTICE

In addition to the safety instructions in this document, also observe further safety instructions in any other enclosed documents.

## 3 Unit description

This document describes the Ford Connected Charge Station. You can find the exact device details on the type label of the Ford Connected Charge Station.

Electrical characteristics	SAE
Nominal current (A) (configurable connected load values)	48A
Line voltage (VAC) (nominal)	240 V (Line-to-line voltage)
Grid frequency (Hz) (nominal)	60 Hz
Overvoltage category	II
<b>Protection class</b>	I
Residual current device	See table 4.
Integrated power meter	Accuracy +/- 5%
<b>Connections</b>	
Cable feed	Mounted on-wall, or in-wall
Connection cross-section (wire dimension)	2x 6 AWG (L1/L2) 1x 8 AWG (GND) (follow local codes/regulations)
Charging cable (including coupler)	Charging cable with Type 1 coupler according to SAE J1772 Cable length 20 ft / approximately 6 m
Output voltage (V AC)	240 V
Maximal charging capacity (kW)	11 kW
<b>Communication &amp; features</b>	
Vehicle-charger Communication Protocol (CP)	SAE J1772
Authentication	Bluetooth (BLE 4.2) – Setup App

Electrical characteristics	SAE
Display	9 RGB-LEDs
Network interfaces	Wi-Fi 802.11n - 150 Mbit/s
Authentication and mobile communications	Bluetooth (BLE 4.2) - Setup-App
Ocpp	Version 1.6
<b>Mechanical data</b>	
Dimensions (W x H x D)	10.2 x 17.7 x 5.5 Inches 258 x 450 x 141 mm
Weight (including wall mount bracket & charging cable)	17.53 lbs 7.95 kg
Installation height	Minimally 35 inches above floor level (regarding to the bottom of the device) Minimally 900 mm above floor level (regarding to the bottom of the device)
IP protection class	NEMA Type 3S, IP65
Protection against mechanical impact	UL2994
<b>Ambient conditions</b>	
Operating temperature range	-40°F to +140°F -40°C to +60°C
Storage temperature range (°C)	-40°F to +185°F -40°C to +85°C
Altitude (m)	Max. 9,842 ft above sea level Max. 3,000 m above sea level
<b>Certification compatibility</b>	
Other standards and guidelines	ANSI/UL2594:2016 / CAN/CSA C22.2 No. 280-16 ANSI/UL2231-1:2012 / CAN/CSA C22.2 No. 281.1-12 ANSI/UL2231-2:2012 / CAN/CSA C22.2 No. 281.2-12 FCC Part 15, Subpart B / ICES003

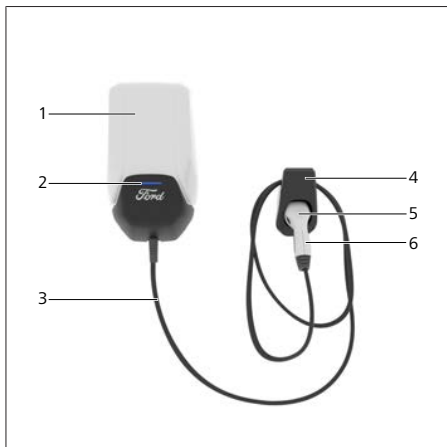
Electrical characteristics	SAE
	FCC Part 15, Subpart C / RSS.2010 / RSS-GEN NEC Article 625 compliant
Tested OCPP backends	Ford OCPP (Open Charge Point Protocol) server



#### NOTICE

A shutdown, or a reduction in charging current, may occur to prevent the charge station overheating.

### 3.1 Product overview



1 Designer cover	4 Remote dock
2 Status indicator	5 Coupler lock button (if equipped)
3 Charging cable	6 Charging coupler

### 3.2 Wireless interface connections

#### 3.2.1 Bluetooth

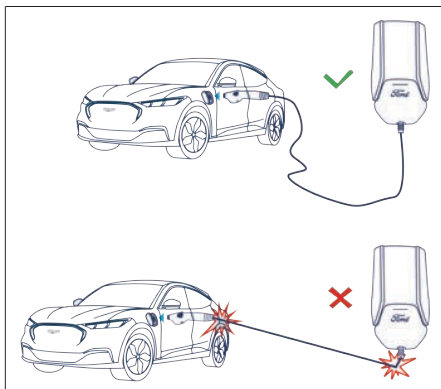
The Bluetooth connection is used to set up the Wi-Fi AP (access point) when starting up the charge station. Note that you cannot control the charging charge station through Bluetooth.

#### 3.2.2 Wi-Fi

You can use Wi-Fi communication to connect the charge station to the charging backend. This enables you to configure the charger remotely through the FordPass™ app.

### 4 Product location considerations

When choosing the installation location for the Ford Connected Charge Station, make sure that the location allows the charging cable to reach the vehicle charge port without straining the cable.



You must also make sure that:

- If you are installing more than one Ford Connected Charge Station, then you must minimally leave 200 mm (7.9 inches) in between.
- The Ford Connected Charge Station is installed at least 900 mm (35.5 inches) above floor level.

- The mounting surface is solid and strong.
- The mounting surface is completely flat.
- The mounting surface does not have any flammable substances.
- The pavements and escape routes are not obstructed.
- You have fault-free Wi-Fi reception if you want to remote control the charger through the Ford backend.
- The Ford Connected Charge Station is outdoor-rated; however, for locations in intense climates, you may want to shield the unit from intense direct sunlight and spray to extend its useful life and fault-free operation.

### 5 Operation

#### 5.1 Start charging

To start a typical charging session:

1. Unlock the charge station If the charge station is locked ( ) (see „chapter 5.4 Status indicator“).
2. Open vehicle charge port cover.
3. Remove the coupler from the remote dock.
4. Plug the coupler into the vehicle charge port until it clicks. The charge station should indicate that the vehicle is connecting to the charge station ( ).
5. As soon as the vehicle and charge station are connected, the charge station indicator exhibits one of the following states:
6. The charge station will be in standby ( ) if the vehicle is fully charged or scheduled to charge later.
7. The charge station will begin charging ( ).

#### 5.2 Stop charging

You will generally end a charging session when charging is complete (indicated by the charge station status indicator being in standby state ( ), but you can also interrupt and end an incomplete charging session.

To stop a charging session: